



## Adept Technologies Inc.

For more than 21 years Adept Technologies<sup>®</sup> has been developing enterprise software systems to corporate and government agencies.

Adept Technologies<sup>®</sup> has built a reputation of providing state of the art software systems, with excellence and exceptional customer service. Since the release of Adept Enterprise<sup>®</sup> in 2001, our robust and solid software foundation has continued to provide a center of expansion of technology by modular platforms to our customer base.

**Adept Enterprise<sup>®</sup>** is an enterprise software system that provides comprehensive management of all activities to conduct business. It is specifically designed for Municipal Governments, Hydropower Project Reservoirs licensed by FERC, Corporate Real Estate Divisions, Water Districts, EPA, U.S. Army Corps of Engineers, Permit and Licensing operations.

Every Adept Enterprise<sup>®</sup> system comes with end-to-end customization tailored to meet your organization's unique business processes and growing needs. Adept's flexible Enterprise as a Service licensing plans provide you with options to purchase only what you need.

With today's mounting threats with cybersecurity, all our software products infrastructure is secured by the Adept Enterprise<sup>®</sup> cybersecurity software systems we developed. The Adept Enterprise<sup>®</sup> Secure is a private cloud and on premise enterprise cybersecurity platform that provides convenient, and safe centralized access for the comprehensive management and automation of mission critical systems.

Accessing Adept Enterprise<sup>®</sup> systems in the secure Adept private cloud or on-premise environment not only enhances productivity, but also streamlines management processes and enhances working relationships with your business customers, saving time and money.

Adept Technologies<sup>®</sup> offers integrated cybersecurity technology within all our business process management software systems. Adept's cybersecurity technology ensures that sensitive data remains safe and that end users are protected. Adept's cybersecurity technology is coupled with 24X7 monitoring and expert guidance from our professionals.

**CONFIDENTIALITY NOTICE** The above price lists are proprietary and confidential. No part of this document may be reproduced or disclosed in any manner to a third party without the prior written consent of Adept Technologies Inc. 2022

## Adept Enterprise<sup>®</sup> Products and Services

**Adept Enterprise<sup>®</sup>** is an enterprise software system that provides convenient, centralized access for the comprehensive management and automation of mission critical systems. Every Adept Enterprise system comes with end to end configurable software tools, tailored to meet your organizations unique business processes and growing needs.

We offer Adept Enterprise<sup>®</sup> in **3 flavors**; On-Premise, Private Cloud, and Hybrid with embedded software application add-ons such as Integration Automation Tool Sets, Legacy Data Conversions, 3<sup>rd</sup> party GIS Systems, Workflow and Online Customer Portals.

Offering Adept Enterprise<sup>®</sup> in 3 flavors gives our clients the flexibility to manage their systems, that best fits their organization, and prevents critical information from being in the hands of the wrong people. Accessing Adept Enterprise<sup>®</sup> On-Premise, Private Cloud and Hybrid not only enhances productivity, but also streamlines management processes and enhances working relationships with your business customers, saving time, money, and protecting your critical data.

We work together with our customers as a team to mold and enhance Adept Enterprise<sup>®</sup> securely around your organization, and we are proud to provide the best customer support available.

**CONFIDENTIALITY NOTICE** The above price lists are proprietary and confidential. No part of this document may be reproduced or disclosed in any manner to a third party without the prior written consent of Adept Technologies Inc. 2022

Call for more information: **888-392-9623** Or visit us online: [www.adepttech.com](http://www.adepttech.com)

## Adept Enterprise<sup>®</sup> is Cyber Secure

With today's mounting threats with cyber security, Adept Technologies mandates that our products and infrastructure must be safeguarded with the Adept Secure<sup>®</sup> Standard. Adept Technologies offers proprietary, integrated cyber security technology throughout all of our software applications. To ease our clients from cyber security threats, Adept Tech ensures that sensitive data remains safe and that all end users are protected. Adept's applications are coupled with 24X7 monitoring and expert guidance from our professionals.

Adept Enterprise<sup>®</sup> Private Cloud customers at "myadept.com" will always have superior protections with Adept Secure<sup>®</sup> while our on premise systems customers are held to same comprehensive cyber security standards.

### Mature Software, Extensive Expertise

Adept Technologies offers extensive, mature enterprise solutions that provide built-in workflow automation, centralized data access, GIS Mapping Integration and secure internet access. Our partnered approach helps our customers achieve their goals by improving process efficiencies and enhancing competitiveness, driving greater returns on their IT investment.

More energy companies and government agencies are selecting Adept Technologies to help them improve their operations, reduce costs and to maintain compliance with federal regulations. Adept has a proven track record to demonstrate the qualities of leading edge software providers.

- Adept Tech has the expertise to understand the diversity of requirements within various agencies and support your organization, no matter what size.
- Adept Tech offers an open architecture which allows flexibility and simplicity in connectivity.
- Our customers are skilled and trained on Adept's products with high levels of customer input and engagement within the product development cycle.
- Our consultative approach applies technology to practical problems with a continuous expansion of our system capabilities.

Committed to excellence, driven by product reliability and focused on customer satisfaction, we hold ourselves to standards that exceed industry best practices.

**CONFIDENTIALITY NOTICE** The above price lists are proprietary and confidential. No part of this document may be reproduced or disclosed in any manner to a third party without the prior written consent of Adept Technologies Inc. 2022

## Adept Enterprise<sup>®</sup> Products

Adept Enterprise<sup>®</sup> offers a suite of products for the comprehensive management and automation of data and mission critical systems. Each system is configurable to meet your specific requirements. Below is a list of featured products:

### Adept Land Management

Manage the life cycle of permits and activities for:

- Building
- Planning
- Code Enforcement Complaints and Violations
- Public Health, Public Works
- Online Citizen Portal

### Adept Shoreline Management

Meet FERC requirements and code compliance for Real Estate, Recreation and Shoreline Departments:

- Permits such as Docks, Seawalls, Vegetative Buffers, Existing Uses
- Compliance Enforcement
- Property Transfer Tracking
- Property and Tax Assessor Data Management

### Forestry Management

Specifically designed for timber-related industries and sustainable restoration initiatives:

- Manage Stands and Stand Inventory
- Timber Inventory, Timber Volumes and Values
- Track Scale Reports and Contracts
- Manage Treatments Type Activities

### Asset Management

Manage and support your assets across your organization:

- Manage Inventory
- Procurement and Contracts and SLA's
- Work Activities and Tracking
- Operations and Maintenance

**CONFIDENTIALITY NOTICE** The above price lists are proprietary and confidential. No part of this document may be reproduced or disclosed in any manner to a third party without the prior written consent of Adept Technologies Inc. 2022

## Adept Enterprise<sup>®</sup> Standalone Applications

Adept Technologies offers standalone feature-rich applications for specialized functionality. The following applications can also be added to your Adept Enterprise<sup>®</sup> system or selected Enterprise Private Cloud Platforms. All standalone modules are configurable to meet your unique needs.

### Account and Billing Management

Manage and process recurring customer billing accounts, invoices and payments. Outstanding invoice balances are displayed and billing can be automatically scheduled. Invoices and statements can be customized. Tax and rent accounts can be linked to multiple properties so a customer can get one bill.

The Adept Enterprise<sup>®</sup> content management system assists enterprise-wide organizations organize, manage and distribute large amount of content in various file types such as documents, images, maps, plans, surveys, emails, and web pages. With embedded workflow, staff can easily collaborate and exchange data to create, edit, track and update content based on pre-defined user access.

### Licensing Management

With Licensing Management you can automate licensing and registration for businesses, professionals and licensing agencies. Easily process and manage applications, payments and generate renewal notices. Automated routing and workflow enables task prioritization and enhanced collaboration.

### Community and Organization Management

Sign-up community volunteers and civil-minded organization to sponsor litter removal programs such as Adopt-A-Shoreline and Adopt-A-Highway. Organize events and manage your volunteer's clean-up progress while volunteers track their hours and stay connected.

### Online Citizen Portal

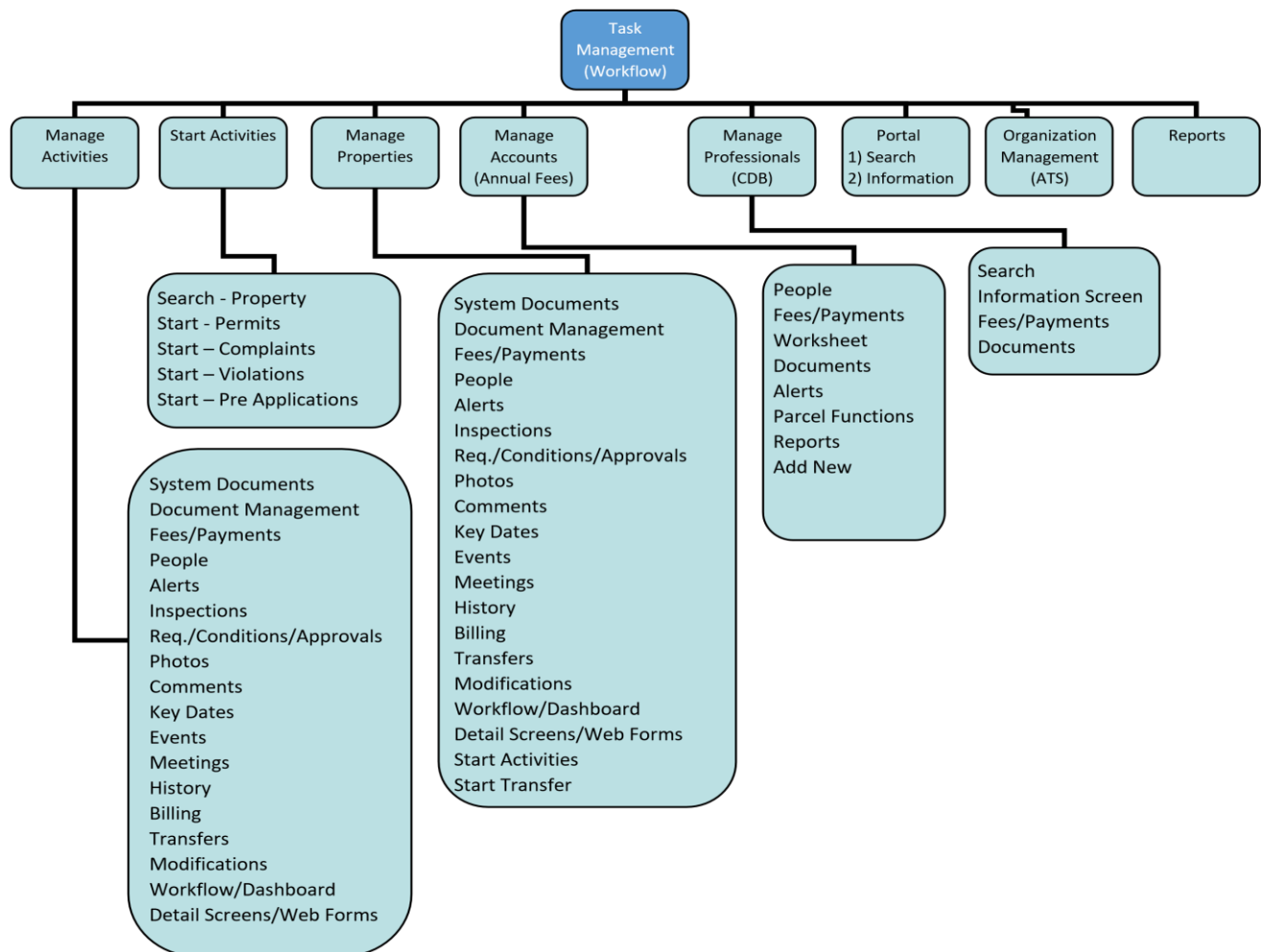
With the Online Citizen Portal you can connect your enterprise system for public online access. Your customers can apply for permits, schedule inspections, sign permits and track the current status of their permit applications and compliance complaints. Streamline your operations by offering your customers online application submittal and user account registration. The Adept Citizen Portal will automatically prioritize submittals and requests for staff review and processing.

**CONFIDENTIALITY NOTICE** The above price lists are proprietary and confidential. No part of this document may be reproduced or disclosed in any manner to a third party without the prior written consent of Adept Technologies Inc. 2022

## Adept Enterprise<sup>®</sup> Workflow Task Management

The Workflow Task Management module is a flexible, built-in workflow management tool that allows multiple users to track and manage required tasks and monitor the task status and outcomes. Customized workflows allow multiple users to track and manage deadlines, requested inspections and tasks that are automatically assigned based on the type and subtypes of all record activities. Staff can easily monitor action items and task outcomes and track project status, meeting agendas and correspondence that has been sent.

The Adept Enterprise<sup>®</sup> Task Management Workflow module is embedded within the Adept Enterprise Platform. See diagram below.



**CONFIDENTIALITY NOTICE** The above price lists are proprietary and confidential. No part of this document may be reproduced or disclosed in any manner to a third party without the prior written consent of Adept Technologies Inc. 2022

## Adept Enterprise<sup>®</sup> MyAdept Private Cloud Overview

For the MyAdept Enterprise Private Cloud platform option, you have a choice of different user options ensuring you only pay for the functionality you need, meeting budgetary guidelines and streamlining processes.

Each platform is offered in three levels. Each successive platform level offers greater functionality. Additional single modules can be added to any Platform Edition level if they are not included.

### Platform Edition Options

#### Standard Edition

The Standard Edition provides you with the common features you need to manage your selected premier platform.

#### Advanced Edition

The Advanced Edition offers you everything in the Standard Edition plus advance tools to further manage your data and processes.

#### Elite Edition

Elite Edition offers you premium features that fully utilize all the functions of the Adept Private Cloud platform.

Adept Technologies sales representatives are available to help you further define which functionality you require to meet your objectives and provide you with more information on our products, pricing and implementation process.

**CONFIDENTIALITY NOTICE** The above price lists are proprietary and confidential. No part of this document may be reproduced or disclosed in any manner to a third party without the prior written consent of Adept Technologies Inc. 2022

Call for more information: **888-392-9623** Or visit us online: [www.adepttech.com](http://www.adepttech.com)